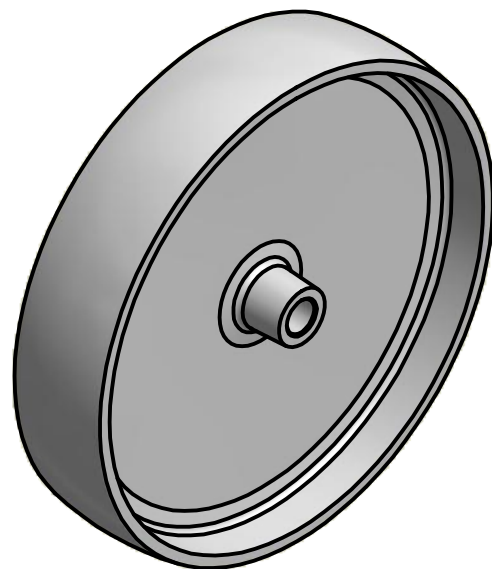



SECTION A-A'



**Load Capacity: 100kgr, for speed up to 4km/h
(According to EN 12530)**

 THESSALONIKI - GREECE	PRODUCTION OF INSTITUTIONAL CASTORS AND WHEELS		PERMIS. VARIATIONS:		PART No:	
	This drawing is the property of RODA S.A. It must neither be reproduced in any manner nor shall it be submitted to third parties or competitors without our written consent		SURFACE FINISH :		UNF . DIM.:	
DESIGNED 18/6/2013 E.POLIMEROPOULOU		DRAWN 18/6/2013 E.POLIMEROPOULOU		PART NAME : WL-NA150S		
CHECKED 11/6/2013 H.SAATZOGLOU		QUANTITY		SCALE		SHEET No.
C3 B2 A1 A/A		REPLACE :		PART DESCRIPTION : HEAVY DUTY WHEEL OF POLYPROPYLENE, Ø150mm-PLAIN BEARING		
				DRAWING NUMBER :		GEN. DWG. NUM. :